

www.premierhose.com



INDUSTRIAL RUBBER HOSE AND TUBING MANUFACTURING

premier

High Quality Custom Made Industrial Hose Products

"Big or small, we make them all"

Your specialty is our standard!



1-866-666-1190

info@premierhose.com





"How It's Made" video filmed in our plant!
Check how we produce our hoses!

www.premierhose.com



As seen on  **Discovery**
CHANNEL



Scan with your
smartphone to
view our video.

premier

This is not a
complete catalogue!

All our products are
CUSTOM MADE.
The purpose of this
document is to give
you an idea of what
we can do!

Granby

www.premierhose.com

PREMIER INDUSTRIAL HOSE MANUFACTURING LIMITED

565 Rutherford, Granby, QC, J2G 3Z2, Canada

TEL: 450-777-1190 TOLL FREE: 1-866-666-1190 FAX: 450-777-0772

E-Mail: info@premierhose.com

ABOUT US	3
-----------------	----------

YOUR SPECIAL DESIGN

What are your needs?	4
Sizes	5
Rubber compounds	5
Reinforcement options	5
Hose cover options	5
Electrical conductivity	6
Testing	6
Special ends	6
Special forms	9

PRODUCTS

	Air & water	10
	Chemical & acid	12
	Marine	13
	Food	14
	Material handling	16
	Petroleum	23
	High temperature	24
	Steel & automotive industry	25
	Rubber tubing	26
	Specialty hoses	28

TERMS AND CONDITIONS OF SALE	29
-------------------------------------	-----------

CONTACT US	30
-------------------	-----------

Premier Industrial Hose Manufacturing Ltd was founded in 1994 by three entrepreneurs with more than 100 years of combined experience in the hose industry. They were committed to fill the niche market of specialty hose, where quality and value are demanded by the end user.

In today's competitive market, more and more manufacturers are looking for a niche to fill, a place in the market where they can satisfy the particular needs of distributors. **Premier's** niche is SPECIALTY HOSES. *"Big or small we make them all".*

Sizes from 3/8" up to 40" ID (max 50 ft lengths from 3/8" to 14" ID).

At **Premier**, we welcome inquiries for specialty hoses, material conducting hoses, food hoses, inflatable hoses, non-standard diameters and lengths, all types of tubing, exact dimensions, lathe cut, hoses with special ends: cuffs, enlarged ends, rubber flanges, beaded ends, built-in nipples & flanges, threaded nipples, Victaulic nipples, etc.

We are specialized in problem solving and our goal is to provide you with the best product for your specific application. **We respond quickly to your inquiries and we offer fast deliveries.**

Our major markets are Canada and the USA. However, we also export hoses to several other countries.

The next time you have an inquiry for special rubber hoses, please give us a call or send us an e-mail or fax; we want to be your source for specialty hoses!

- RANGE OF SIZES FROM **3/8" UP TO 40" ID.**
- FAST DELIVERY.
- WE DON'T NEED BIG PRODUCTION RUNS.
- PRODUCTS MADE TO YOUR SPECIFICATIONS.
- HIGH QUALITY RAW MATERIALS, **coming from certified Canadian and US suppliers!**
- SPECIAL APPLICATIONS OR MODIFIED PRODUCTS.
- WE DEVELOP CUSTOM DESIGNED PRODUCTS TO SUIT YOUR NEEDS.
- **ALL PRODUCTS** MADE TO RMA TOLERANCES, **manufactured in our Granby plant.**

What are your needs? We can design a custom made hose to meet your specific requirements.

Please follow this guideline to give us the information to better understand your needs:

1. Internal diameter.
2. Wall thickness or external diameter.
3. Installation length.
4. Permissible tolerances for data 1-2-3.
5. Products to be handled, concentration.
6. Temperature of products.
7. Abrasive action on tube.
8. External influences affecting cover (temperature, wear, chemicals, etc.).
9. Working pressure, continuous or intermittent.
10. Vacuum.
11. Required flexibility, minimum bending radius.
12. Dynamic stress.
13. Special color requirement.
14. Special data for helix-reinforced hose: smooth or corrugated cover.
15. Type of ends, length of ends, diam. of ends, enlargement.
16. Couplings, clamped or built-in.
17. For intricate applications: installation drawing helpful.
18. Quantity.



Sizes

3/8" up to 14" ID: max 50 ft continuous lengths.

14" up to 24" ID: max 30 ft continuous lengths.

24" up to 40" ID: to be advised depending on mandrels available.

Rubber compounds - We work with several different compounds including:

- NATURAL RUBBER (pure gum: tan, red, black, white, orange)
- SBR
- NEOPRENE
- NITRILE
- EPDM
- HYPALON
- CHLOROBUTYL
- VITON
- SILICONE



Also available:

- UHMW PE (ultra high molecular weight polyethylene)
- XLPE (cross-linked polyethylene)
- POLYURETHANE

The following compounds are available in WHITE FDA
Pure gum, Neoprene, Nitrile, EPDM, Chlorobutyl, Silicone.

Reinforcement options

Polyester, nylon or fiberglass fabric, steel helix wire, nylon helix wire, non-conductive rubberized fabric.

Hose cover options

Cover can be smooth or corrugated.

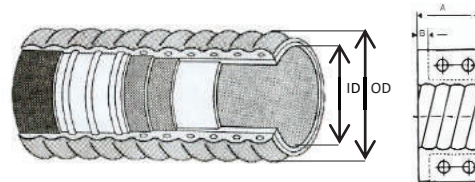
Different colors available: red, green, yellow, gray, blue, orange and more.

High temperature cover is available:

- Fiberglass
- Aramid
- Nomex
- Bonded silicone

Hose can be custom branded

Fiberglass cover



Slurry hose, special corrugation to fit aluminum split flanges. Used in mining industry.

Electrical conductivity

We can meet your conductivity requirements:

- Non-conductive tube
- Full non-conductive construction
- Static conductive high abrasion tube
- Static wire incorporated in the hose



Testing

We can perform several tests, such as:

- Hydrostatic pressure test
- Vacuum test
- Electrical conductivity
- Wet and dry abrasion test for hose wear



Special ends

- Built-in nipple (stub end, threaded end, Victaulic end, fix flange, floating flange)
- Rubber lined nipple & flange
- Molded rubber flange
- Molded beaded end & split flange
- Enlarged end to your specific ID
- Soft cuffs (wire is eliminated providing a soft end easy to clamp)
- Straight end or plain end (end of hose is simply cut with no special connection)
- Lathe cut (ideal for short pieces that require high precision cut)
- Tapered end
- Built-in nozzle

NOTE: flanges can have ANSI 150# or 300# drilling, DIN drilling or any custom design



Lathe cut neoprene pieces



Petroleum hoses c/w stainless steel nipples & flanges 300#



Papermill washdown hose c/w built-in nozzle

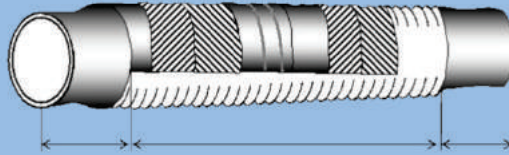


Pure gum and SBR tubing cut to your length

See the following pages for more details on end configurations!

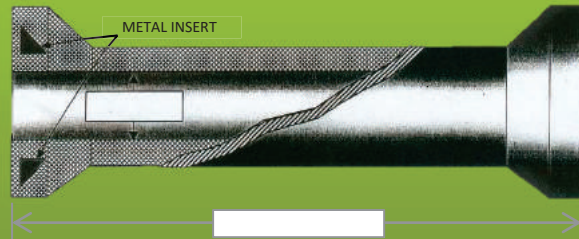
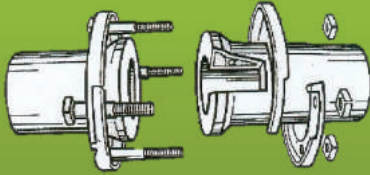
SOFT CUFFS

Ideal for easy clamping of hoses having a wire reinforcement and a corrugated cover. Specify the overall length of the hose and length of cuffs. Outside diameter of cuffs can also be specified if critical.



BEADED ENDS WITH SPLIT FLANGES

Ideal for joining hose with a flexible rubber to rubber joint offering great strength. Hose ends are flared outward reinforced with steel rings and are capped with rubber. Split flanges encircle the hose behind the flared portion, and are bolted and tightened together without twisting the hose, compressing the soft rubber hose end together and forming a leakproof seal which requires no gasket.



RUBBER FLANGES

The rubber flange is built as an integral part of the hose during manufacturing. This end provides a hose with no metal in contact with the media conveyed, therefore no contamination, abrasion or chemical action.

It is constructed to the same dimensions as standard flanges. A heavy steel back-up flange may be vulcanized into the flange or supplied as a separate part to be placed as back-up support.



BUILT-IN NIPPLES

Large size hoses for oil suction and discharge and other similar services are commonly fitted with metal nipples. The nipples are usually fabricated from short lengths of steel pipe, threaded on the outer end.

- Hose is built around nipple.
- After vulcanization, hose and nipple are an integral unit that will not leak or blow out.
- Nipple can be supplied either **threaded** for attaching flange or grooved for **Victaulic** clamp.



Two band Nipple



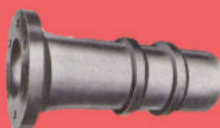
Built-in Nipple

NIPPLE AND FLANGE

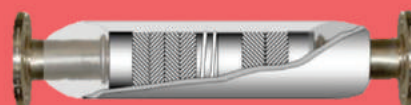
The nipples are first positioned on the mandrel so that the hose is built over the nipples. The nipples are locked into the hose by means of circumferential grooves or raised metal bands on the outside of the nipple. After vulcanization, the hose and nipple are an integral unit that will not leak or blow out.

Flanges can be fixed or floating.

Carbon steel or stainless steel.



Nipple & Flange



Example of hose construction

RUBBER LINED MATERIAL CONDUCTING HOSES

Large size hoses for the mining industry are commonly fitted with metal nipples. The nipples are usually fabricated from short lengths of steel pipe, **threaded** on the outer end, grooved for **Victaulic** clamp, or c/w a welded **flange**.

Rubber lining of the nipples is often requested because it insures a smooth rubber tube all along the hose. The hoses will last longer because the nipples, protected by the rubber, won't wear too quickly.



Rubber Lined Victaulic Nipples

Premier can manufacture preformed elbows, "Y", "T", ...



*Built-in rubber flange
at an 8° angle*



"T" hose



Silicone radiator hose



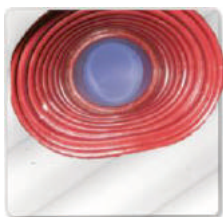
*Preformed connector, one
end enlarged.*



"Y" shape



Preformed 135°



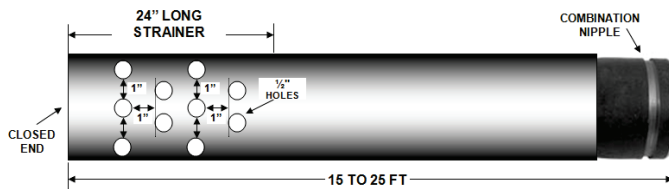
*Flexible connector, accordion construction: inside and outside
corrugation for improved flexibility.*



Preformed 90°



*Abrasion resistant elbow, one end enlarged, used in
mining industry.*



*Crush proof suction hose, c/w built on strainer on
one end, used in mining industry.*



Below are examples of the types of hoses that we manufacture

Premier AIR

A premium quality mining air hose designed to resist rough conditions underground. Bright yellow natural rubber cover with blue stripe to identify as Premium quality 400 psi air hose. Also recommended for large dam and hydro projects.

TC Premier AIR

Exceptionally thick orange natural rubber cover added to the Premier Air hose construction, for service under abnormally rough working conditions.

HEAVY DUTY WATER DISCHARGE

This hose has *old fashioned ruggedness*. Solid construction for use in: dewatering mines, construction sites, open pit coal mines, dewatering subways and city sewers. Green cover identifies premium quality hose.

CONTRACTOR'S WATER DISCHARGE

An economical and lightweight layflat discharge hose for ease of handling and portability. Used on low pressure portable pumps, generally in municipal flooding, light irrigation and home construction sites.

HEAVY DUTY WATER SUCTION

A versatile water suction hose, strong enough for the toughest of construction sites. Suitable for both diaphragm or centrifugal pumps. Used by municipalities for redirecting sewers in flooding conditions.

POTABLE WATER (discharge / suction)

A mirror smooth, clean white synthetic rubber compound specially designed so as not to impart taste. Tube meets FDA requirements. Primary use is for temporary hook ups during municipal water line repairs and potable water delivery.

PAPERMILL WASHDOWN HOSE

Very flexible, non kinking, green cover washdown hose for use on the wet end of paper making machines. A **Premier** quality product. With built-in rubber nozzle.

HOT WATER WASH DOWN

A very flexible, non kinking washdown hose, used in food processing plants, soft drink bottlers and cheese factories. Suitable for hot water to 180°F. Available with FDA white compounds. Also available with built-on rubber nozzles.

Need a water or air hose c/w vulcanized ends?

Threaded nipple, Victaulic nipple, nipple
& flange, rubber flange, beaded end, ...

Give us a call or send an e-mail!
info@premierhose.com



2" premium grade Air Hose
400 psi - Thick cover



Papermill Washdown Hose
with built-in rubber nozzle



Do you need a:

6" bull hose c/w Victaulic nipples ?

26" water hose c/w beaded ends & split
flanges 150 lbs ?

Call **Premier!**

premier **StrainerVac**

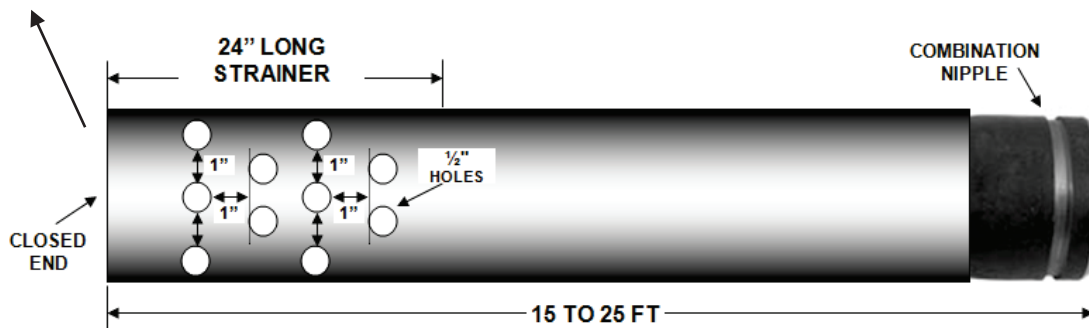
A crush proof, heavy duty suction hose, c/w a built-in strainer on one end.

Used in mining applications or any other industry where you need a **crush proof** water suction hose with a **built-in strainer** on one end in order to prevent the intake of rocks or any other debris. Our strainer, as an integral part of the hose, won't be damaged during use as a normal steel strainer would. The other end of the hose is supplied with a clamped-on combination nipple (Victaulic or threaded).

*Our special **Premier** construction insures a full vacuum, crush proof suction hose!*

ID	OD	VACUUM	WEIGHT (lbs/ft)	BEND RADIUS
2"	2.94"	Full	2	15"
3"	3.94"	Full	2.8	24"

Length: standard 15 ft to 25 ft





Below are examples of the types of hoses that we manufacture

EPDM

An all purpose versatile chemical and acid conducting hose for use in: chemical, agricultural, pulp & paper and mining industries. Not suitable for oils or gasoline.

CSM (HYPALON)

Proven over the years as a reliable acid and chemical synthetic rubber compound. Hypalon resists a great number of strong acids and highly concentrated chemicals.

PURE GUM

Where considerable flexibility is a must, and pure gum meets the corrosive conditions, pure gum *Chemical & Acid* conducting hoses have been an old standby in the plating industry for many years.

CROSS LINKED POLYETHYLENE (XLPE)

A favorite of road transporters and rail haulers because of the very large range of chemicals and acids this hose can handle. Temperature is a consideration, please verify before employing. Translucent XLPE acid resistant tube, EPDM cover.

UHMW POLYETHYLENE

An outstanding *Chemical & Acid* conducting hose, especially where abrasive products are being conveyed. Far superior abrasion resistance than most polyurethane's, nylons or even stainless steel. Temperature is a consideration, please verify before employing.

FKM (VITON)

Designed to convey hydrocarbons and highly aromatic fluids. Suitable for well over 90% of known acids and chemicals which makes this a very versatile hose for haulers. Permits more flexibility than metal hoses.

CHLOROBUTYL

Excellent resistance to high temperatures, permeation, and a wide assortment of corrosive chemicals. Well over 40 years history of handling acids. Available in black or white FDA.

Information we need from you:

- S** (Size)
- T** (Temperature)
- A** (Application)
- M** (Material being conveyed)
- P** (Pressure)
- E** (Ends configuration)
- D** (Delivery required)



*Double Helix Acid Conducting Hose
(corrugated cover)*

Available with:

- Built-in rubber flange
- Beaded end & split flange
- Built-in stainless steel nipple & flange
- Enlarged end
- Soft cuffs

Below are examples of the types of hoses that we manufacture

WATER INTAKE (SOFTWALL)

A versatile marine hose used in many applications in boat building. Engine water intake, sanitation connections, scupper lines and bilge discharge. Black cover with green stripe. Meets or exceeds U.S.C.G. requirements.



WATER INTAKE (HARDWALL)

Embedded steel helix wire allows wide bends without kinking. Suitable for engine water intake, sanitation connections, scupper lines and bilge discharge. Black cover with green stripe. Meets or exceeds U.S.C.G. requirements.

WET EXHAUST (SOFTWALL)

Heavy wall certified for wet exhaust service. Ideal for short straight connections. Spiral polyester tire cord reinforcement helps prevent shock and vibration. Black cover, blue stripe. Meets or exceeds U.S.C.G. requirements.



WET EXHAUST (HARDWALL)

Extremely flexible, hardwall wet exhaust hose, designed for use where long bends are necessary in boat installations. Many other applications on board, other sizes and colours available. Black cover, blue stripe. Meets or exceeds U.S.C.G. requirements.

MARINE SILICONE COOLANT

Designed for use when higher than normal temperatures are required. Red tube and cover. Other colours available. Also available with or without embedded helix wire.

*Marine Exhaust Hardwall
branded as to type and size.
Could also have your name branded on it.*

**We can lathe cut to
your specific length!**



Below are examples of the types of hoses that we manufacture

FLOUR SUCTION

Designed with a smooth white natural FDA rubber tube to resist abrasion where abrasion is involved. For both suction and discharge of edible food products, such as flour, sugar, beans and other abrasive foods. Corrugated cover with double helix wire makes an extremely flexible hose.

FLOUR DISCHARGE

Premium quality discharge hose used for conveying flour and other edible food products under pressure where portability is a consideration. Smooth white FDA natural rubber tube.

BREWERS SUCTION

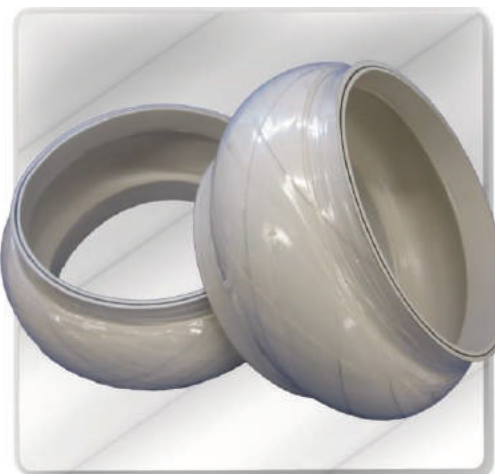
A premium quality brewers suction hose designed for full vacuum. Extremely smooth tube, will not harbor bacteria, ease of cleaning and will not impart taste. Meets FDA requirements.

BREWERS DISCHARGE

A premium quality hose designed for conveying beer, without imparting taste. Extremely smooth tube ensures easy cleaning and elimination of bacteria buildup. 2, 4, 6, plies available on request. Meets FDA requirements.



Food hoses



Food one arch connector

Several premium white FDA compounds
available to suit your needs:
**Pure Gum, Neoprene, Nitrile,
Chlorobutyl, EPDM, Silicone.**

Also available: clear FDA UHMW.

**MILK SUCTION**

Extremely flexible premium quality milk delivery hose suitable for milk and other edible liquids containing fats or vegetable oils under vacuum or pressure. Made with smooth white FDA synthetic rubber tube. Meets 3A sanitary standards.

MILK DISCHARGE

Fat and vegetable oil resistant, smooth white FDA synthetic rubber tube ensures long life. A lightweight hose for good portability, yet resistant to high pressure. Meets 3A sanitary standards.

POTABLE WATER DISCHARGE

A mirror smooth, clean white synthetic rubber compound especially formulated so as not to impart taste. Tube meets FDA requirements. Primary use is for temporary hook ups during municipal water line repairs and potable water delivery.

FISH SUCTION HOSE

A very flexible hose designed with two embedded steel helix wires, with a corrugated cover to maximize flexibility. Specially compounded natural rubber tube designed to resist cutting action of fish being unloaded from ship holds, nets and barges.

FOOD PLANT WASHDOWN HOSE

A premium quality washdown hose, designed to withstand rough usage in the food and fish industry. Meets FDA requirements. Extremely flexible hose, spiral wound high tensile tire cord construction which minimizes kinking. Also available with built-on rubber nozzles.

FDA GRIND FINISHED HOSES

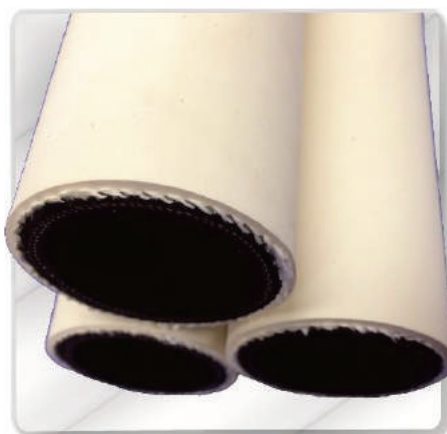
Used in food plants where a very smooth grind finish hose is needed for easy cleaning. The hose connector can also be insulated to prevent condensation.



Liquid sugar conveying hose



Color coded, corrugated cover food hoses.



FDA grind finish hose, insulated.



Below are examples of the types of hoses that we manufacture

DRYBULK (softwall) DISCHARGE

An exceptionally abrasion resistant natural rubber tube compound designed to give long service life. This hose is used for truck and train car unloading of abrasive products such as dry cement, silica, salt and fertilizers.

DREDGE SLEEVES

Designed to resist the rugged conditions incurred during dredging operations. Thick abrasive resistant (wet sand slurry) pure gum rubber tube. Multiple plies to minimize kinking. Used as flexible connectors on steel pipe lines. Available with enlarged ends, plain ends, or built-in fittings.

SAND SUCTION HOSE

Designed with a thick natural rubber tube to improve flexibility yet resistant to wet abrasive conditions. Available with various types of ends.

INDUSTRIAL VACUUM HOSE

Designed for use where flimsy air ducting hose is not suitable. Built with tube rubber compound to suit many applications: pure gum, abrasives resistant black compound, oil and gas resistant nitrile. Also available with EPDM tube and cover suitable for *Chemical & Acid* exhaust fumes.

MATERIAL CONDUCTING HOSE

A wide range of hoses are available for use in the mining industry, chemical industry and the pulp & paper industry. These hoses are generally hand built for specific applications, **with tube thickness of: 1/4", 3/8", 1/2", or up to 1" thick.** Inside diameters from 2" to 40" ID.

Hoses available with:

- Built-in rubber flange
- Beaded end & split flange
- Built-in steel nipple & flange
- Built-in nipple threaded or Victaulic
- Enlarged end
- Soft cuffs

ALL NIPPLES CAN BE RUBBER LINED



Material Conducting, tan pure gum tube, c/w rubber flanges & steel backup rings.



Industrial Vacuum Hose, c/w soft cuffs.

Natural Rubber compounds for your abrasive applications:

Red Premium Pure Gum

Tested as **equivalent or superior to all competitors** compounds.

Tan or Black Pure Gum

High grade compounds, mostly used for wet abrasive applications.

Black High Abrasion static conductive 60 duro compound

Proven as the Premium choice in dry abrasive applications.

GUNITE HOSE

Soft tan pure gum rubber tube gives maximum flexibility for guniting application in swimming pools, high hydro dams, tunneling and refracting steel furnaces. Available with static conducting wires. Also available with black special high abrasion resistant static conducting tube.

SANDBLAST HOSE

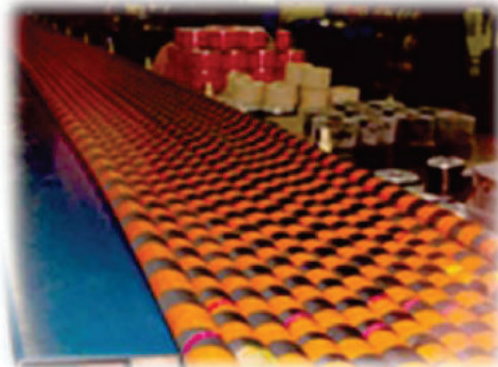
A very flexible, non-kinking hose with exceptional wear resistance. Static conducting rubber tube compound dissipates static. **Premier's** sandblast hose is produced, ensuring very close outside diameter tolerances to eliminate coupling blow off as a result of undersized hose. Can also be used in shotcrete applications.

PLASTER HOSE

Flexible and lightweight for ease of handling. Spiral tire cord construction minimizes kinking. Exceptionally smooth tube makes clean up easy.

MINING SANDFILL HOSE

Premier is specialized in manufacturing sandfill hoses with rubber lined fittings such as Victaulic nipples or nipples & flanges. Working pressure up to 1000 psi. Hoses available with wear wire. **Premier** also manufactures the "Casing" hose with built-in fitting on one end only.



Premium Sandblast Hose



*120 hoses in production!
8" material conducting, Premier Red
Pure Gum Tube, c/w molded beaded
ends & 150# split flanges.*



*22" slurry hoses, pure gum tube, c/w built-in
rubber lined nipples & flanges 150#.*



*26" material conducting hose, pure
gum tube, c/w beaded ends & rings.*



ELEPHANT TRUNK HOSE

Very flexible hose designed for use where there is gravity flow of dry bulk products or wet concrete with no pressure. Embedded fabric helps prevent tearing. Also used as vibration dampeners in air conditioning ducts. Available in inside diameters up to 40".

"GIMBAL" MATERIAL CONDUCTING HOSE

Hose engineered with a high abrasion resistant tube and special individual rings built into the hose carcass. This construction provides extra flexibility.



Gimbal hose in service



Gimbal hose in fabrication

MATERIAL CONDUCTING HOSES with **WEAR WIRE**

Large size hoses for the mining industry, such as the **SANDFILL MATERIAL CONDUCTING HOSES**, are commonly fitted with **rubber lined metal nipples**. The nipples are usually fabricated from short lengths of steel pipe, **threaded** on the outer end, grooved for **Victaulic** clamp, or c/w a welded **flange**. If the user wants to detect when the hose liner is worn, **a wear wire can be incorporated in the hose construction!** The wire ends will come off from one end of the hose: when there is no more conductivity between the two ends of the wear wire, you know that the wear wire is broken and the tube is worn!



Sandfill material conducting hose. Rubber lined nipple & 300# flange with incorporated wear wire.

CERAMIC LINED FLEXIBLE RUBBER HOSE

Designed for improved abrasion resistance when a conventional rubber hose requires frequent replacement.

The hose is lined with ceramic balls vulcanized to a high abrasion resistant rubber compound. The ceramic ball design insures wear and impact resistance and allows for good flexibility.

The hose cover can be corrugated to fit standard aluminum split flanges. Other types of ends are also available.

If required, the hose can be protected from high temperature with silicone, fiberglass or nomex.

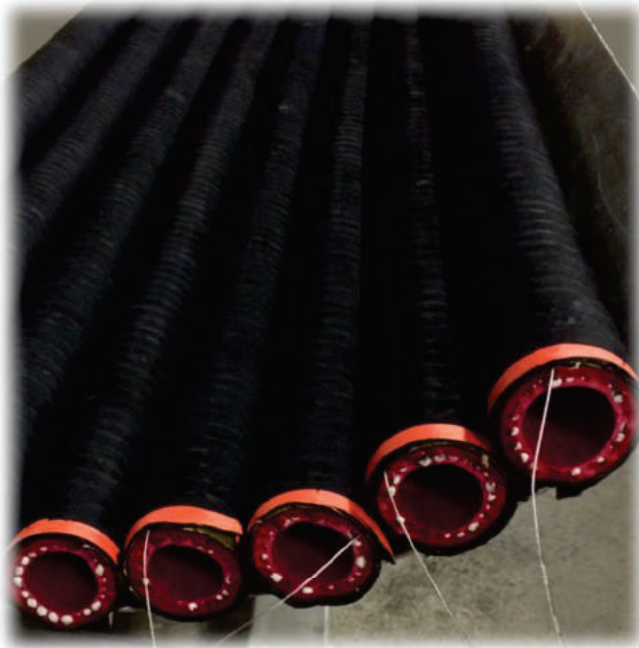
Custom built in a wide range of sizes and lengths up to a maximum of 50 ft continuous.



Ceramic lined hose, fiberglass cover, c/w aluminum split flanges 150#.



Close-up of the ceramic liner.



1 1/2" ID material handling hoses, corrugated cover, with a static dissipating wire. The ceramic balls are embedded in a premium red pure gum compound.



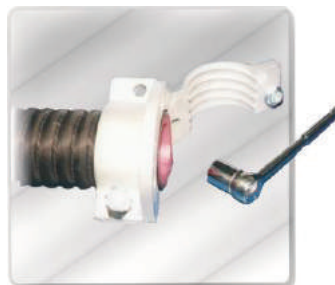
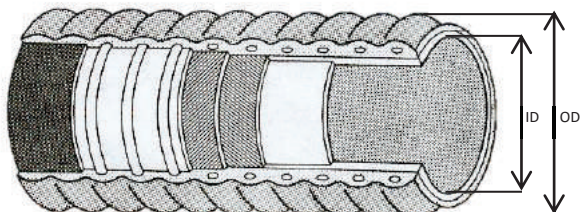
1 1/2" ID discharge hose. The ceramic balls are embedded in a black 60 duro high abrasion synthetic rubber.



SPLIT FLANGE HOSE

SPLIT FLANGE MATERIAL CONDUCTING HOSE

Split flange couplings are bolted on the outside of this hose. The corrugated cover of our hose matches the inside design of the split flanges ensuring a secure fit without obstructing the flow of the abrasive materials inside the hose. Abrasive resistant rubber tube and suitable reinforcement permit up to 150 psi working pressure. This hose eliminates the need to stock hoses of exact lengths with built-in couplings. Standard sizes available up to 14" ID.



HOSE TUBE: Tan or Premium Red Pure Gum – Black Synthetic Abrasion Resistant

ID	OD	TUBE THICKNESS	MIN. BEND RADIUS	WEIGHT	W.P.
(in)	(in)	(in)	(in)	(lbs/ft)	(psi)
2	3	3/16	12	2.30	150
3	4 1/2	3/8	15	4.80	150
4	5 1/4	3/8	20	4.89	150
5	6 29/64	3/8	26	8.00	150
6	7 1/2	3/8	30	8.70	150
8	9 1/2	3/8	69	12.60	150
10	11 1/2	3/8	79	14.80	150
12	13 3/4	3/8	99	20.10	150
14	16	3/8	119	29.20	150



40 ft container load of 8" and 10" material conducting hoses and aluminum split flanges.

Our hose is compatible with the standard aluminum split flanges available on the market!

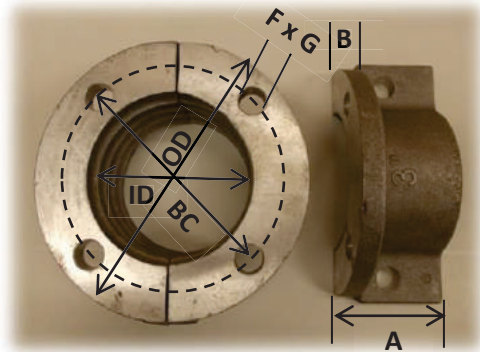
Our precise corrugation makes for a perfect match with the split flanges!

High consistency – High grade materials
A **Premier** Quality Hose!

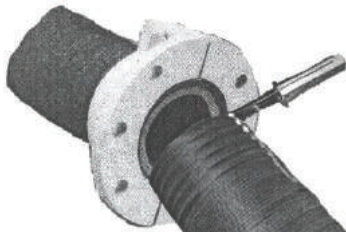
SPLIT FLANGE HOSE

Split Flange Hose, Aluminum Split Flanges + Assembly Instructions

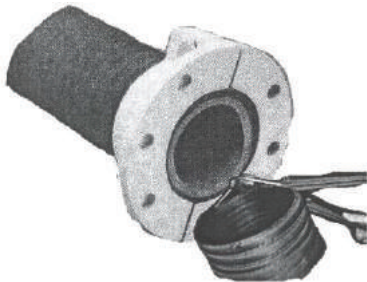
(flange dimensions in accordance with ANSI B16.5 class 150)



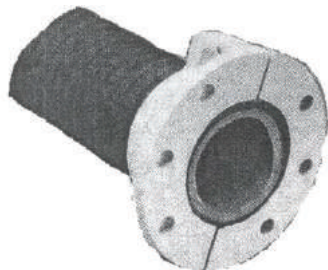
ID OF HOSE (in)	A (in)	B (in)	BC (in)	OD (in)	F (in)	G (in)	WEIGHT APPROX. (lbs)
2	$3 \frac{11}{32}$	$\frac{5}{8}$	$4 \frac{3}{4}$	6	4	$\frac{3}{4}$	3.3
3	$3 \frac{5}{16}$	$\frac{5}{8}$	6	$7 \frac{1}{2}$	4	$\frac{3}{4}$	4.4
4	$3 \frac{5}{16}$	$\frac{5}{8}$	$7 \frac{1}{2}$	9	8	$\frac{3}{4}$	6.6
5	$4 \frac{1}{8}$	$\frac{5}{8}$	$8 \frac{1}{2}$	10	8	$\frac{7}{8}$	7.7
6	$4 \frac{1}{2}$	$\frac{3}{4}$	$9 \frac{1}{2}$	11	8	$\frac{7}{8}$	8.8
8	$5 \frac{7}{8}$	$\frac{3}{4}$	$11 \frac{3}{4}$	$13 \frac{1}{2}$	8	$\frac{7}{8}$	13.2
10	$6 \frac{7}{8}$	$1 \frac{1}{8}$	$14 \frac{1}{4}$	16	12	1	25.4
12	$7 \frac{11}{16}$	$1 \frac{1}{8}$	17	19	12	1	30.9
14	$7 \frac{11}{16}$	$1 \frac{1}{8}$	$18 \frac{3}{4}$	21	12	$1 \frac{1}{8}$	35.3



- 1) Measure and mark the hose at the place where you want to cut it with a silver point pen.



- 2) Put the half shells of the coupling provisionally on the hose in order to mark it straight. Cut the hose at the mark with a sharp, slightly wet cutting tool (e.g. a knife or a plain saw) up to the steel wire helix. Pull the two halves of the hose apart. The steel wire helix is torn out of the cut. Cut it with a hack-saw or cable cutter directly at the surface of the cut, the spiral must not overtop the hose.



- 3) Put both half shells of the coupling on the hose. The corrugation inside of the coupling must lie exactly on the corrugation of the hose. Use a screw clamp as assistance. The end of the hose must overtop the flange by $\frac{3}{16}$ " (3 to 5 mm).
- 4) Screw both half shells together up to the point where the inside of the hose shows slightly corrugated deformations. A small gap equally large on both sides must remain between the half shells. The service life of the system may be reduced significantly if the coupling is installed too tight or too loose.
- 5) It is recommended to place a gasket between both flange couplings. The hose ends pressed against the gasket will ensure a leak-proof assembly.



HOSES ENGINEERED FOR VACUUM LOADERS & VACUUM TRUCKS



Vacuum hose in service



8" Vacuum Truck Hose

VACUUM HOSES 4" UP TO 14" ID

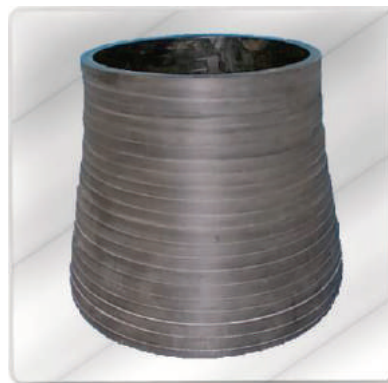
- Smooth bore and corrugated cover.
- Different tube compounds available: tan or red pure gum 40 ShA, black static conductive abrasion resistant 60 ShA.
- Available in standard sizes and lengths.
- Also available c/w soft cuffs for easy installation.

FLEXIBLE CONNECTORS 4" UP TO 24" ID

- Accordion construction, built to specific length c/w soft cuffs.
- Street sweepers, leaf collectors, ...



Leaf Collectors, c/w soft cuffs.



Vacuum tapered connector sleeves



Below are examples of the types of hoses that we manufacture

HOT TAR & ASPHALT HOSE

Used by road repair crews for applying hot liquid tar to road cracks on roadways. Also used by roofing contractors and petroleum companies to transport hot tar.

PETROLEUM DISCHARGE

Soft wall petroleum discharge hose used for unloading or loading under pressure or gravity flow. Ease of handling makes this hose ideal when portability is required. Ideal for gas, diesel fuel, hydraulic oils and other petroleum products.

OIL SUCTION & DISCHARGE

Built with a smooth cover or a corrugated cover to provide flexibility in petroleum transfer service. Used to transfer gasoline, oil, and other petroleum based products having up to 50% aromatic content.

DROP HOSE

This hose is designed for use by tank trucks with gravity drop unloading of gasoline at service stations. A lightweight, extremely flexible hose, even during cold weather. Suitable for temperatures from minus 40°F to plus 150°F.

TANK TRUCK HOSE

Designed for loading and unloading railcars and truck tankers at refineries under pressure. A flexible hose with a smooth cover to minimize friction drag. Suitable for temperatures from minus 40°F to 150°F. Tank truck hoses can be made with a corrugated cover for additional flexibility.

VAPOUR RECOVERY

A lightweight very flexible hose used in exhausting or recycling gas and oil vapours from trucks and tankers during loading and unloading of petroleum products.



16" ID x 25 ft Oilfield Hose, c/w nipples & flanges 150# fix x floating.



1-1/2" ID Tank Truck Hoses



12" ID x 33 ft Oil Suction & Discharge Hoses, c/w built-in stainless steel nipples & flanges 300#.

Do you need a FLOATING petroleum hose?

Call **Premier!**



10" ID x 40 ft oil petroleum floater hose, c/w molded beaded ends & 150# split flanges. 2" thick special floating cover!

TAR SANDS

A special abrasion and oil resistant compound is used as a liner for hoses in the tar sands!



Below are examples of the types of hoses that we manufacture

FIBERGLASS STEAM

This hose was designed with fiberglass tire cord reinforcement for steam applications up to 100 psi. Used in and around electrical installations, in electro-plating factories and other industries where a non-conductive hose is essential for safety reasons.



Fiberglass Steam Hoses

HOT AIR BLOWER

Very flexible hose made with EPDM compound and high temperature reinforcement to ensure continued resistance to high temperatures of compressors on dry bulk cement, bulk flour trucks etc. Special helix wires are embedded to maximize flexibility.



Hot Air Blower, corrugated cover.

RADIATOR HOSE

Many non-standard diameters available. This high temperature hose is made with heat resistant EPDM compound. Suitable for very hot water and anti-freeze coolants. Also available with EPDM/SILICONE high temperature blend compound for higher temperature applications such as buses, trucks and off-road vehicles.



Silicone Reinforced Hose

SILICONE HIGH HEAT HOSE

A blend of SILICONE and EPDM compounds permit both high temperatures and high working pressures because of utilization of fiberglass tire cord reinforcements. While this compound was developed for radiator hose applications, with fiberglass reinforcement much higher pressures are now possible.



12" ID special elbow:

*fiberglass interior
+
bonded silicone rubber
+
nomex cover*

*c/w built-in aluminum
nipple on one end.*

Examples of High Temperature Materials:

- EPDM peroxide cured
- Silicone
- Viton
- Fiberglass
- Nomex
- Silica

Below are examples of the types of hoses that we manufacture

FURNACE DOOR HOSE

This hose is used as a flexible connector conveying coolant water to furnace doors. Available with Nomex or Fiberglass cover. Also available as non-conductive hose for use on electrical furnaces or with stainless steel Armour Guard braids. Large size hose can be made with built-in fittings.

CABLE COVER HOSE

A wide variety of cable cover hoses are available, most commonly for the automotive and appliance industries. Kickless and welding cable covers. Low volt hose or high volt hose. Non-conductive 10,000 volt construction available. As many as 15 inside diameters between 1" and 2" ID are available; i.e. 1-1/16", 1-15/16", 1-11/16". Large diameter Nomex or Fiberglass covered Electric Furnace cable covers, along with the core hose, for steel industry. Hose cover can have molded bumper rings or a continuous spiral bumper.

OXYGEN LANCING HOSE

For use in the steel industry for oxygen lancing and also in shipbuilding yards for welding applications. Green cover, branded "OXYGEN USE ONLY". Available with Nomex or Fiberglass covering.



Oxygen Lancing Hose



*Furnace Door Hose.
Non-conductive, Nomex cover.*



*Oxygen and Fuel hoses,
aramid cover.*



Flat Air Cooled hose



*Stainless Steel braid over
Nomex Furnace Door hose.*



*Cable Cover hoses, fiberglass
cover with spiral bumper.*



*Furnace Door hose, fiberglass
cover, c/w molded beaded ends.*

YOUR HOSE CAN HAVE:

COVER OPTIONS

*Fiberglass, Nomex,
Bonded Silicone, Silica, ...
Bumpers
(molded rings or spiral)*

ENDS OPTIONS

*Beaded ends
Rubber flanges
Built-in nipples
(threaded or with flanges)*



Below are examples of the types of hoses that we manufacture

PURE GUM TUBING

Especially compounded, weather and ozone resistant, natural pure gum rubber. One of the most common rubber tubings used in practically every industry. Our tan pure gum meets or exceeds FDA requirements.

SBR RUBBER TUBING

Black abrasion resistant SBR synthetic rubber compound for applications where abrasion is a problem. Weather and ozone resistant compound.

EPDM TUBING

Black chemical, weather and ozone resistant compound. Also suitable for high heat applications. Several colours available.

NEOPRENE TUBING

Black Commercial Grade neoprene compound, for use in factory applications where resistance to oil is necessary. Also has good ozone and weather resistance. Available in colours as well.

NITRILE TUBING

Black Oil and Gasoline resistant synthetic rubber compound. Used in the petroleum industry where the tubing could come in contact with petroleum products.

LENGTHS AVAILABLE

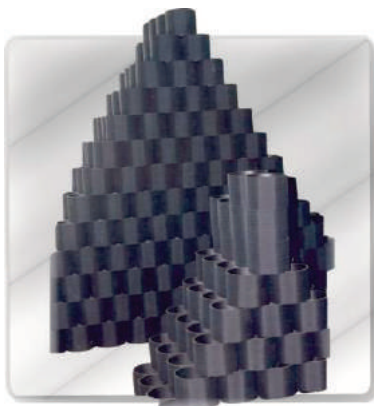
Sizes from:

- 3/8" ID to 12" ID : up to 50 ft.
- 14" ID to 24" ID : up to 24 ft.
- 26" and 30" ID : up to 12 ft.
- up to 40" ID : call for availability.

WE CAN LATHE CUT TO YOUR
SPECIFIC LENGTH!

WHITE FDA

PURE GUM
NEOPRENE
CHLOROBUTYL
NITRILE
SILICONE
EPDM



Black EPDM tubing, lathe cut.



Premium red pure gum tubing



White FDA pure gum tubing

CHLOROBUTYL TUBING

Black or white synthetic rubber compound designed to resist permeation of air & gases. Exceptional shock absorption and ozone and weather resistance. Very low water absorption.

HYPALON TUBING

Rubber compound resistant to a large number of acids and chemicals. Sometimes used as a sleeve to cover hydraulic hoses in chemical factories and other harsh environments.

VITON TUBING

Resistant to most hydrocarbons and highly aromatic solvents associated with chemical and petroleum industries. Also suitable for high heat applications.

SILICONE TUBING

Designed for applications where high temperatures and release properties are a major consideration. Soft and flexible. Available in red or white food grade (FDA).

Also available: CLEAR food grade silicone tubing.

FOOD GRADE TUBING

Premier manufactures a wide variety of food grade tubing, used in the food processing industry. These compounds meet or exceed FDA requirements and can be certified to that effect.



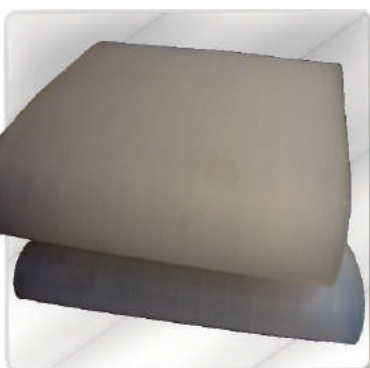
Lathe cut pure gum tubing

GRIND FINISH TUBING

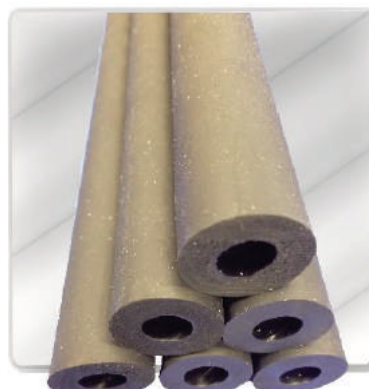
We are equipped to offer precision grind finish parts. Used in any industry where the customer needs a very smooth and precise outside diameter.



Coiled pure gum tubing



Clear silicone tubing



Black SBR grind finish tubing



More specialties that we manufacture

WELL POINT SLEEVES

Water drainage and dewatering systems pipe connectors, used for connecting aluminum pipe in dewatering operations. Mandrel made for perfect fit over aluminum tubing. Pipe sizes like 6-5/8", 8-5/8", 10-3/4" available. Perfectly cut to your required lengths.

PAPERMILL SUCTION BOX

For suction box service at wet end of paper press in pulp and paper industry, where extreme flexibility, lateral deflection and contraction are so important. Convoluted inside tube. Supplied with soft cuffs. Made to order, vacuum rating should be specified when ordering or inquiring.

VITON "DOCTOR BLADE" HOSE

Used in the paper mill industry. A hose made with high grade Viton compound and fabric reinforcement. Common sizes 1" and 1-1/16" ID. Lengths up to 50 ft continuous.

HOSE WITH HEATING WIRE

A hose designed with a built-in heating wire and a sponge insulation. Made for the true North!

HYDRAULIC HOSE WITH HEAT SHIELD COVERING

Do you need your hydraulic hose covered with a vulcanized heat shield protection? You can send us your hydraulic hose and we'll cover it with fiberglass/silicone or fiberglass/non-burning neoprene.

CHINESE POLE COVERING

We service artists worldwide by covering their chinese poles with rubber! The rubber is directly vulcanised on the poles, for perfect bonding.

PERISTALTIC PUMP HOSE

Liner can be in natural rubber, EPDM, Nitrile, Neoprene, Viton, ... Precise outside diameter, wrapped or grind finish. Cut to length.

INFLATABLE HOSE

Used for sewer repairing, pipe plugs, concrete forming. Standard sizes available from 2" up to 24" ID.

PINCH VALVE

We manufacture hoses used in pinch valves, with a high abrasion tube and special reinforcement. Also available with molded ends.



Papermill Suction Box



Viton Doctor Blade Hose



EPDM hose with heating wire, sponge insulation, c/w molded beaded ends.



Chinese pole covering

At **Premier** there is no minimum order size: *"Big or small we make them all"*.

All orders are processed based on written quotations sent by e-mail or fax.

Acceptance of this quotation by the purchaser is interpreted as agreeing to: dimensions, working pressure, type of hose and pricing quoted. Acceptance, production and shipment of any merchandise is, of course, subject to the credit worthiness of the purchaser.

WARRANTY

"The seller guarantees the said goods against defects in material or workmanship for one year from date of shipment provided as follows:

- *The goods are used, operated and maintained in a competent and normal manner by the buyer and in conformity with the seller's instructions.*
- *The seller's liability under the warranty shall be limited to replacement or repairs of any defective goods, free of charge to the buyer or, at the seller's option a refund of the purchase price less any adjusted charge for the service rendered by the defective goods.*
- *Any expressed or implied warranty that the goods are adequate for any particular purpose is hereby negated.*
- *With respect to goods not of the seller's own manufacture, this warranty shall apply only to the extent that the seller is able to enforce a claim of liability against the manufacturer thereof.*
- *The buyer shall give written notice to the seller forthwith after the discovery of any defect and thereafter shall make further use of the goods at his own risk.*
- *The seller shall not be liable for consequential damages arising out of the installation or use of the goods.*
- *This warranty is given in lieu of all other warranties, implied, statutory or otherwise."*

As a responsible corporation, **Premier** carries product liability insurance to protect distributors, in both Canada and the USA.

SHIPPING

All shipments are F.O.B. our factory in Granby, QC.

Shipments can be made collect by your choice of transport or "prepaid and charge" on the invoice.

Premier's transport department will work with you to insure lowest possible freight rates.

Note for shipping in the USA (we are located 30 minutes from the US borders):



- We take care of brokerage and duty.

TERMS OF PAYEMENT: net 30 days from date on invoice.

Contact Premier:

For any questions or to request a quote, don't hesitate to contact us:

Premier Industrial Hose Manufacturing Ltd

565 Rutherford
Granby, QC, J2G 3Z2
Canada

E-Mail: info@premierhose.com

Phone: [450-777-1190](tel:450-777-1190) or toll free [1- 866-666-1190](tel:1-866-666-1190)

Fax: [450-777-0772](tel:450-777-0772)

Website: www.premierhose.com (you can fill out the "inquiry" or "feedback" forms)

To make sure that we quote you on the correct hose, please provide us the necessary information using the **STAMPED** acronym below:

Information we need from you:

- S** (Size)
- T** (Temperature)
- A** (Application)
- M** (Material being conveyed)
- P** (Pressure)
- E** (Ends configuration)
- D** (Delivery required)



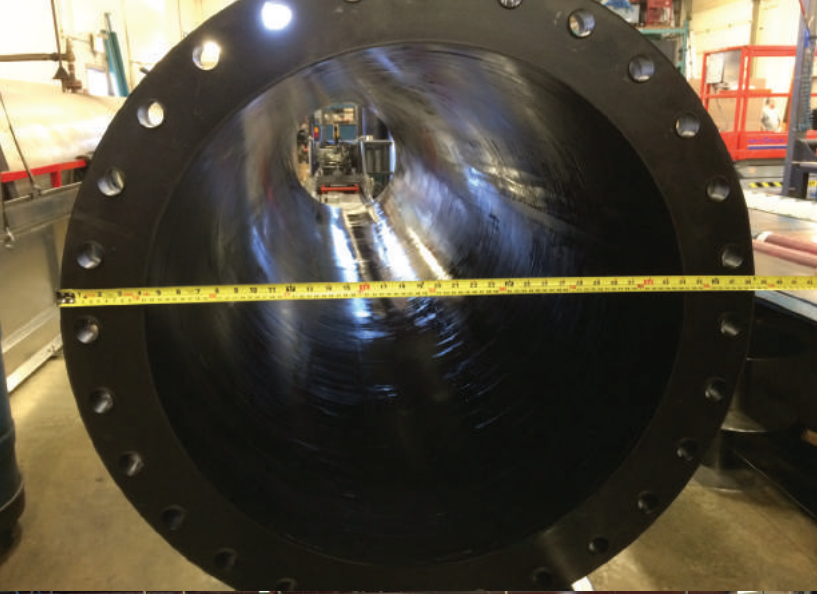
For a special product, we invite you to follow the guideline from the section
YOUR SPECIAL DESIGN on page 4.

[illegible]

Designed to your needs, built with passion!







PREMIER INDUSTRIAL HOSE MANUFACTURING LIMITED

565 Rutherford, Granby, QC, J2G 3Z2, Canada

TEL: 450-777-1190

FAX: 450-777-0772



premier



Scan with your
smartphone to
visit our website.

www.premierhose.com



1-866-666-1190



info@premierhose.com

